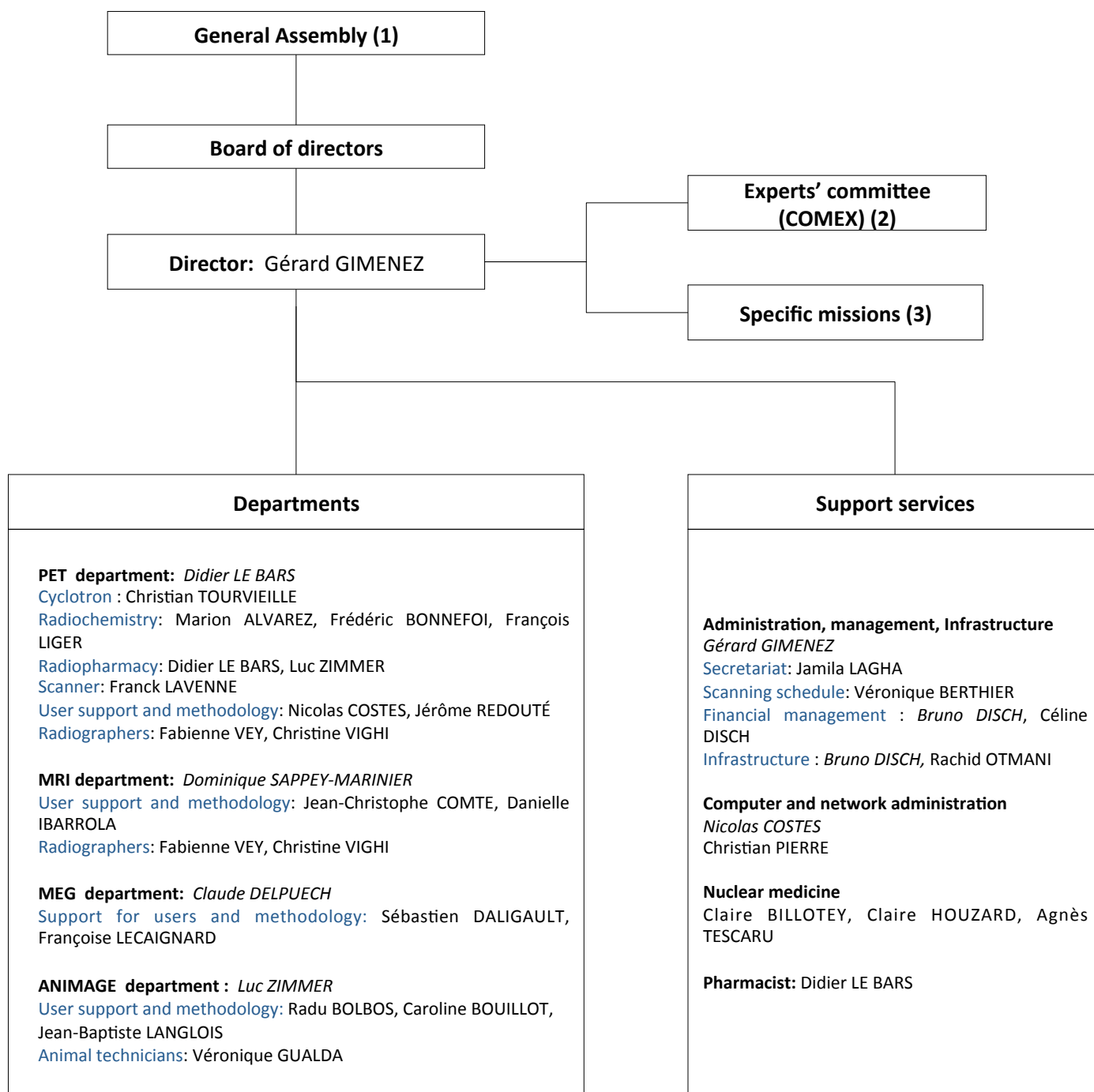


# Operational and functional organizational chart

March 9th, 2011



1) **INSERM** (Medical Research Council): 25% ; **CNRS** (Science Research Council): 25% ; **Hospices Civils de Lyon** (Lyon University Hospitals): 25% ; **Université Claude Bernard Lyon 1** (Lyon1 University): 14% ; **CHU** (University Hospital) **Grenoble**: 5%  
**CHU** (University Hospital) **Saint Etienne**: 5% ; **Université Joseph Fourier Grenoble 1** (Grenoble1 University): 1%

2) **Lyon Neurosciences Research Centre** (Olivier BERTRAND) ; **Cognitive Neurosciences Centre** (Jean-René DUHAMEL) ; **CREATIS** (Isabelle MAGNIN) ; **Stem Cell and Brain Research Institute** (Henry KENNEDY) ; **Neurodis Foundation** (François MAUGUIERE) ; **Lyon Cancer Research Center** (Alain PUISIEUX) ; **IDEE** (Philippe RYVLIN) ; **Cardiology, Metabolism, Diabetes, Nutrition** (CarMeN, Hubert VIDAL).  
 In addition, **Heads of Departments and Support Services** are invited.

3) **Quality management**: Marion ALVAREZ ; **Training**: Sandrine BOUVARD ; **Communication**: Franck LAVENNE ; **Health and safety**: Frédéric BONNEFOI ; **Quality of work life**: Christian TOURVIEILLE ; **Radiation protection**: Didier LE BARS.